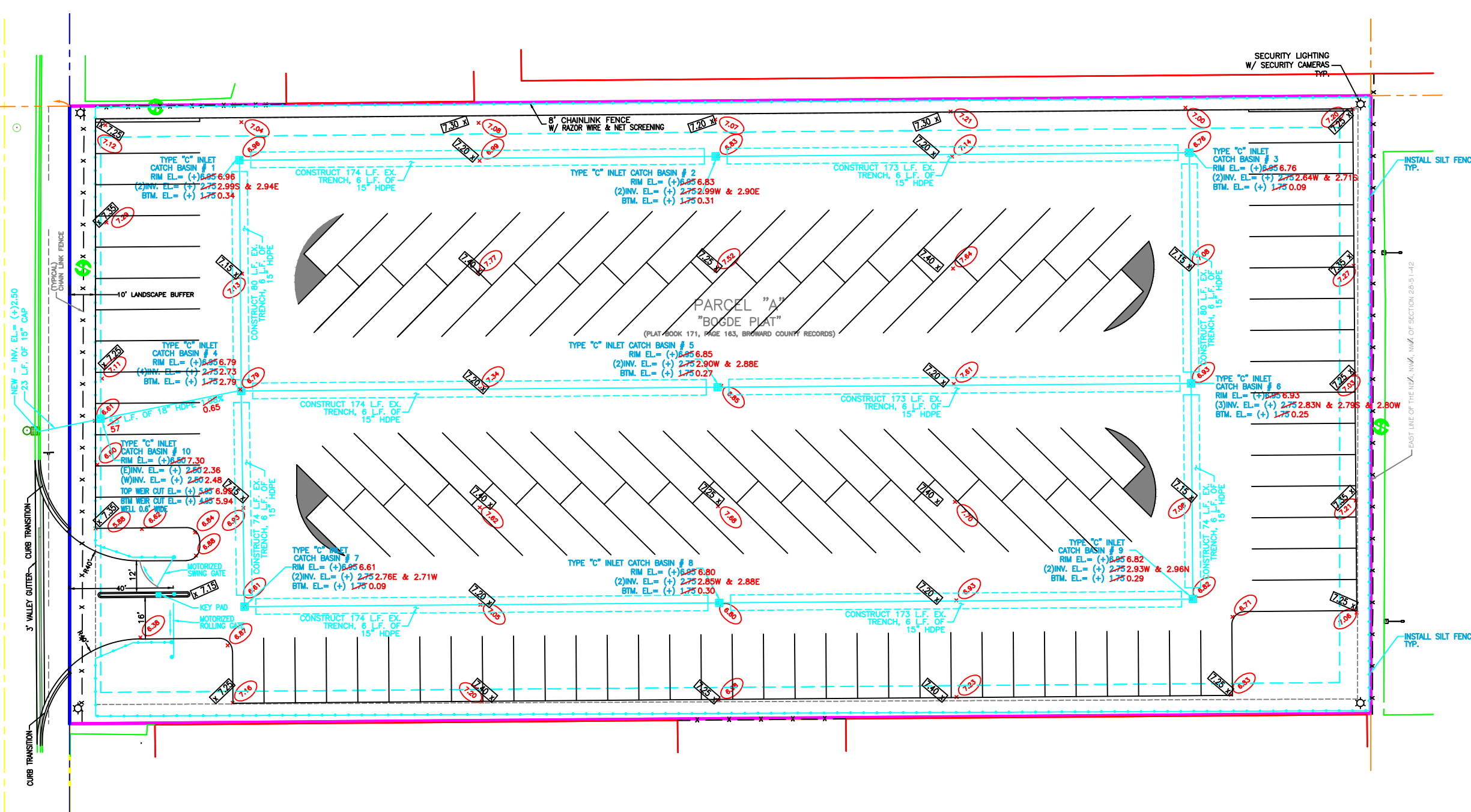




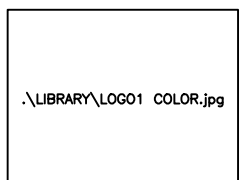
ANSIN BOULEVARD



Revisions  
No./By/Remarks/Approved  
BCDE PGMD Rev: 8/27/2009

CADD File:  
Field Bk. No. Pg.  
Project No.

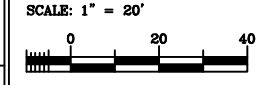
M.R. 5/1/09  
Date  
Drawn by  
R.L. 5/1/09  
Date  
Chk'd by  
Apr'd by Date



The City of  
**HALLANDALE  
BEACH**  
DEPARTMENTS OF PUBLIC WORKS,  
UTILITIES, AND ENGINEERING

CITY MANAGER  
MIKE GOOD  
DIRECTOR OF UTILITIES  
AND ENGINEERING  
WILLIAM BRANT, P.E.  
CITY ENGINEER  
RICHARD LABINSKY, P.E.

**ANSIN  
BOULEVARD  
PARKING  
FACILITY**  
**UTILITIES,  
PAVING, GRADING  
& DRAINAGE**  
SCALE: 1" = 20'



Index  
File No.  
Sheet No. 5 of 7

**RECORD DRAWING**  
PAVING AND DRAINAGE AS-BUILTS  
SURVEYORS CERTIFICATION:  
I HEREBY CERTIFY THAT THE AS-BUILT ELEVATIONS SHOWN  
HEREON ARE TRUE AND CORRECT TO THE BEST OF MY  
KNOWLEDGE AND BELIEF AS SURVEYED IN THE FIELD UNDER  
MY DIRECTION ON DECEMBER 10, 2009  
**GIBBS LAND SURVEYORS**  
2131 HOLLYWOOD BOULEVARD, SUITE 204  
P.S.M. NO. 4574 HOLLYWOOD, FL. 33020 (854)923-7666  
STATE OF FLORIDA LICENSED BUSINESS No. 7018  
NOT VALID WITHOUT THE SIGNATURE AND THE ORIGINAL SEAL OF A FLORIDA  
LICENSED SURVEYOR AND MAPPER

**LEGEND:**  
0.00 AS-BUILT GRADES  
6.98 AS-BUILT ROCK GRADES

**SITE DATA:**  
TOTAL AREA: 2.73 Ac. 87.91%  
IMPERVIOUS AREA: 2.40 Ac. 87.91%  
PERVIOUS AREA: 0.33 Ac. 12.09%

**NOTES:**  
1. FENCING SHALL BE BLACK VINYL COATED.

CITY ENGINEER  
RICHARD LABINSKY, P.E.

P.E. LICENSE #34866